



statement splashbacks

BB vista

welcome to Bushboard

We have been developing kitchen and bathroom surfaces in the UK since 1935 and the idea that everyone deserves great design whatever their budget underpins our entire approach to surfacing.

When you buy a Bushboard product you are buying into our ethos of exceptional quality, exquisite design and excellent value and of course, first class customer care. We are proud that our surfaces are made in the UK.

We want to ensure you get the very best from your new surfaces so our products carry a lifetime guarantee so you can be sure your splashback will look sensational for years to come.

Front cover: Casablanca grey MDF splashback with Evolve Marmo Bianco worksurface in ultramatt texture. Image shows core-coloured drainer grooves.



20 fabulous
designs



lifetime product
guarantee

welcome to splashbacks

Bushboard have developed a brand new range of kitchen splashbacks that make a great style statement behind a sink or hob area and offer a real alternative to traditional tiles.

The choices in our Vista collection are all hardwearing and practical and come in 20 fantastic designs, showcasing the best of current and upcoming trends.

Why not plump for bold, bright colours or geometric shapes to add a touch of panache to your kitchen?

Over the following pages you will find design upon design brought to life in our inspirational collection of sensational splashbacks.

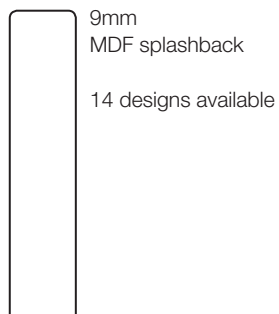
smart splashbacks

A splashback is such a smart choice in place of traditional wall tiles.

Affordable, hygienic and still looking fabulous in years to come, we have a stunning range to choose from.

With geometrics, bold prints, vintage inspiration, and inner city chic, there is an abundance of choice so take a look.

Cost effective installation, little on-going maintenance, possible to update in-line with kitchen trend changes...the benefits are endless!



BB get the look

Here we've used our Herringbone natural MDF splashback with Omega Urban Stone worksurface to create a beautifully, dramatic and stylish kitchen space.

Splashback: Herringbone I natural MDF
Worksurface: Omega Urban Stone in fusion texture.



bold impressions

Splashbacks not only protect your walls, they can be used to add colour, pattern and texture, but which material is right for your space?

We have utilised the latest innovation in surface technology and design to bring you a unique collection of splashbacks utilising two substrates, MDF and acrylic.

Our bold, Casablanca splashbacks are available in two striking colourways on MDF, these surfaces will make a statement in any home.

Pictured right: Casablanca grey MDF splashback with Evolve Marmo Bianco worksurface in ultramatt texture. Image shows core-coloured drainer grooves.



Casablanca grey MDF



Casablanca multi MDF



vintage inspiration

With a double-sided decorative surface incorporating eye-catching designs that you have come to expect from Bushboard, BB vista, our new splashback collection is guaranteed to make a real statement in your kitchen.

The weathered beauty of our Vintage splashbacks reflect timeless elegance and are available in two colourways on MDF.

Pictured right: Vintage taupe MDF splashback with Options Jet Marble worksurface in glaze texture.



Vintage grey MDF



Vintage taupe MDF



city chic

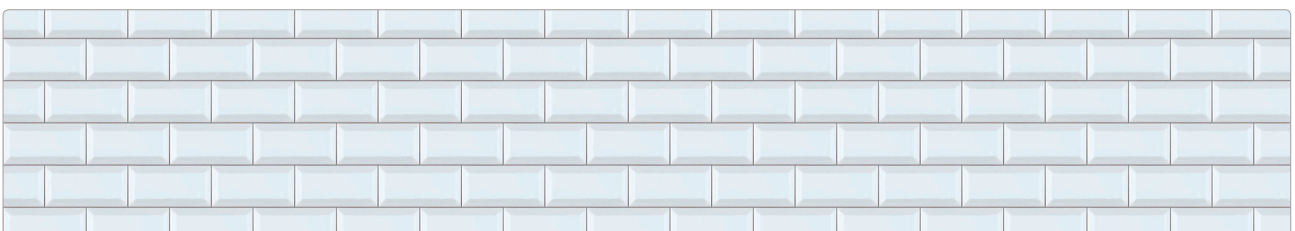
We have the perfect splashback to complete your look and give an urban finish to your kitchen.

Inspired by the London Underground, it is perfect for creating a traditional look with a modern twist.

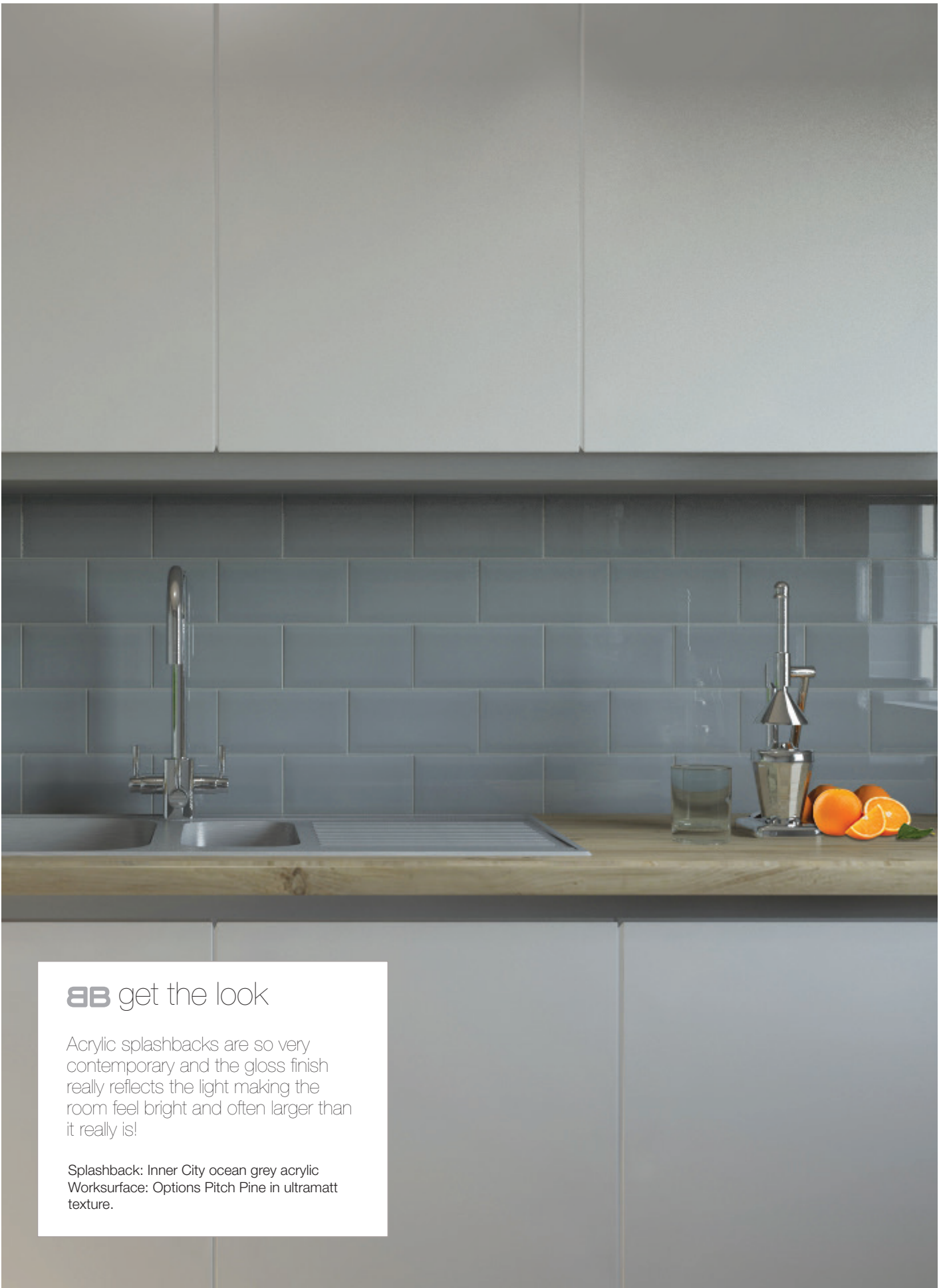
The subway tile style splashback is available in two contemporary colourways on acrylic to give an element of 3D depth to the design.



Inner City ocean grey acrylic



Inner City ice cloud acrylic



BB get the look

Acrylic splashbacks are so very contemporary and the gloss finish really reflects the light making the room feel bright and often larger than it really is!

Splashback: Inner City ocean grey acrylic
Worksurface: Options Pitch Pine in ultramatt texture.

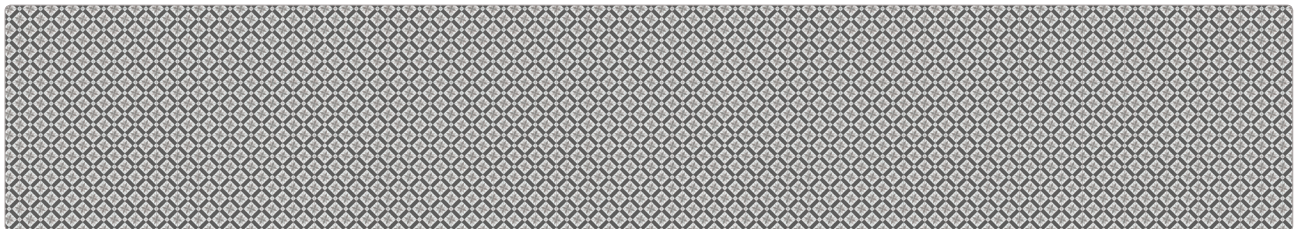
child's play

Bushboard splashbacks are so easy to cut and fit that you only need to employ one tradesman, so less people on site, no messing around with grout and less down-time for your kitchen. Use splashbacks to ensure a speedy transformation.

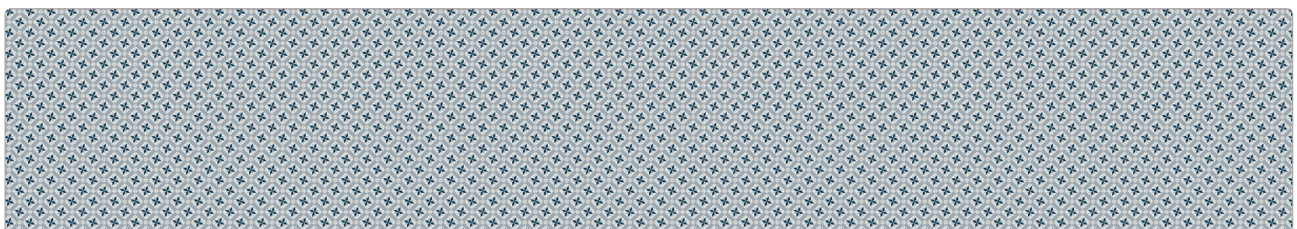
Our Kaleidoscope designs are available in two colourways, mixing tones of the same palette to create a striking look. These are available on acrylic which offers a reflective quality to the surface.

It really is as easy as ABC!

Pictured right: Kaleidoscope charcoal grey acrylic splashback with Options Turin Marble worksurface in ultramatt texture.



Kaleidoscope charcoal grey acrylic



Kaleidoscope cool blue acrylic



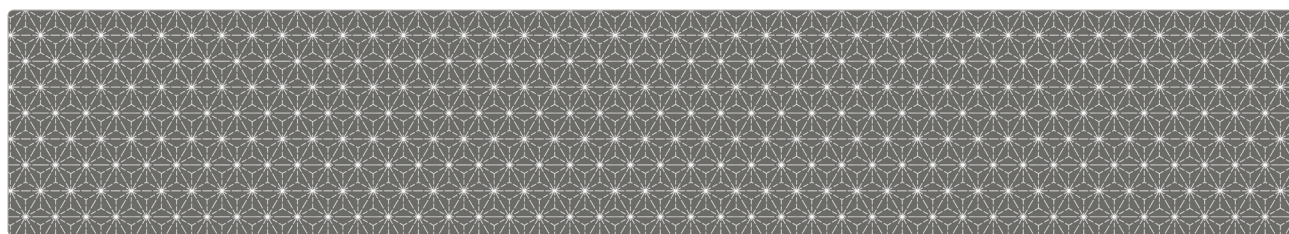
perfect patterns

Add personality and character to a functional space by choosing a statement design that will add depth to your scheme, draw the eye and turn the cooking zone into a focal point.

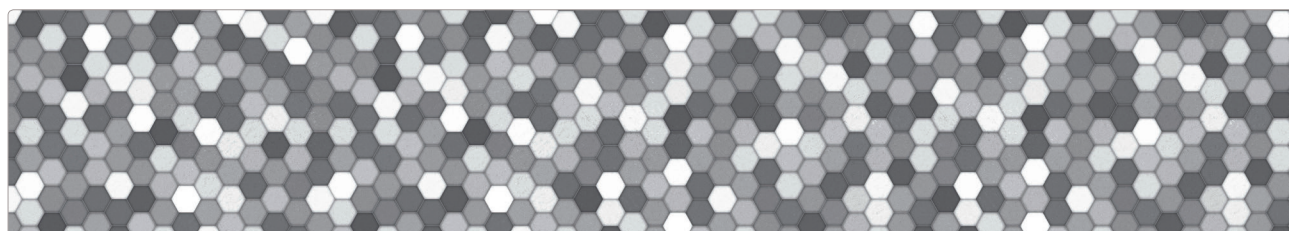
Our duo of perfect patterns offer a repeat decorative design that is sure to enhance any kitchen arrangement.

Why not team these splashbacks with worksurfaces in either ice white, concrete grey or pure black to create a modern monochrome interior?

Pictured right: Constellation acrylic splashback with Evolve Shadow worksurface in touch texture.



Constellation acrylic



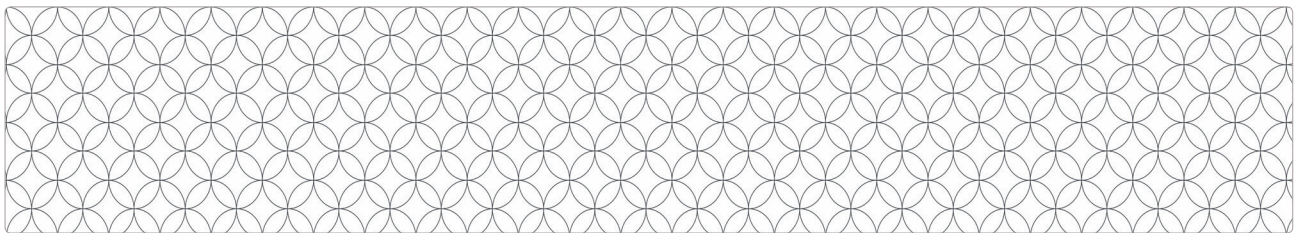
Honeycomb MDF



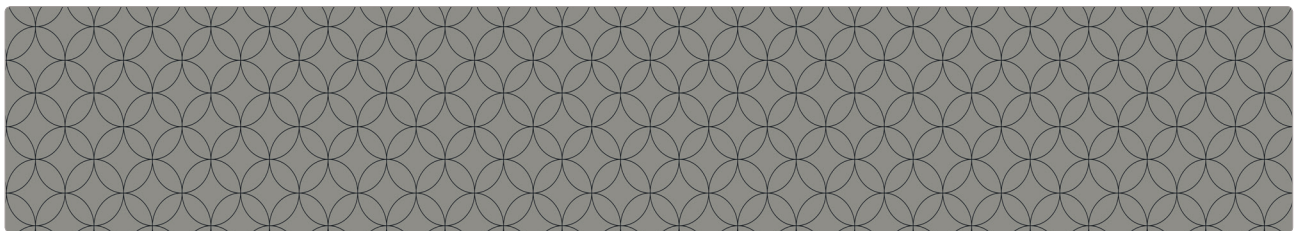
go geo!

A contrasting splashback offers both an attractive and practical finishing detail. Bring your kitchen to life with a geometric design in muted, modern tones.

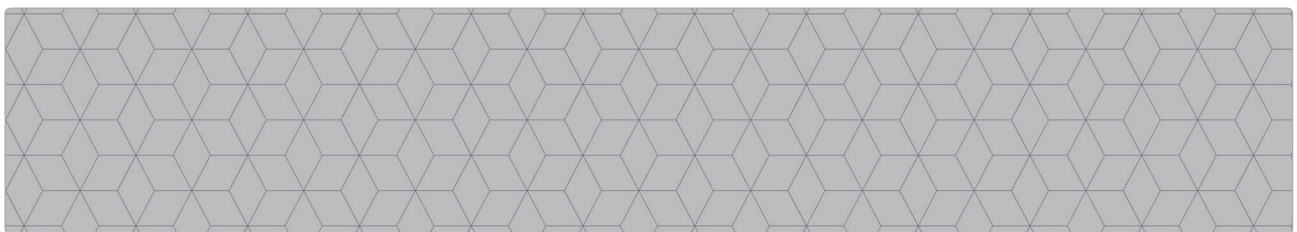
Pictured right: Blocked Hex midnight MDF splashback with Omega Stamford Oak worksurface in ultramatt texture.



Roulette Curves white MDF



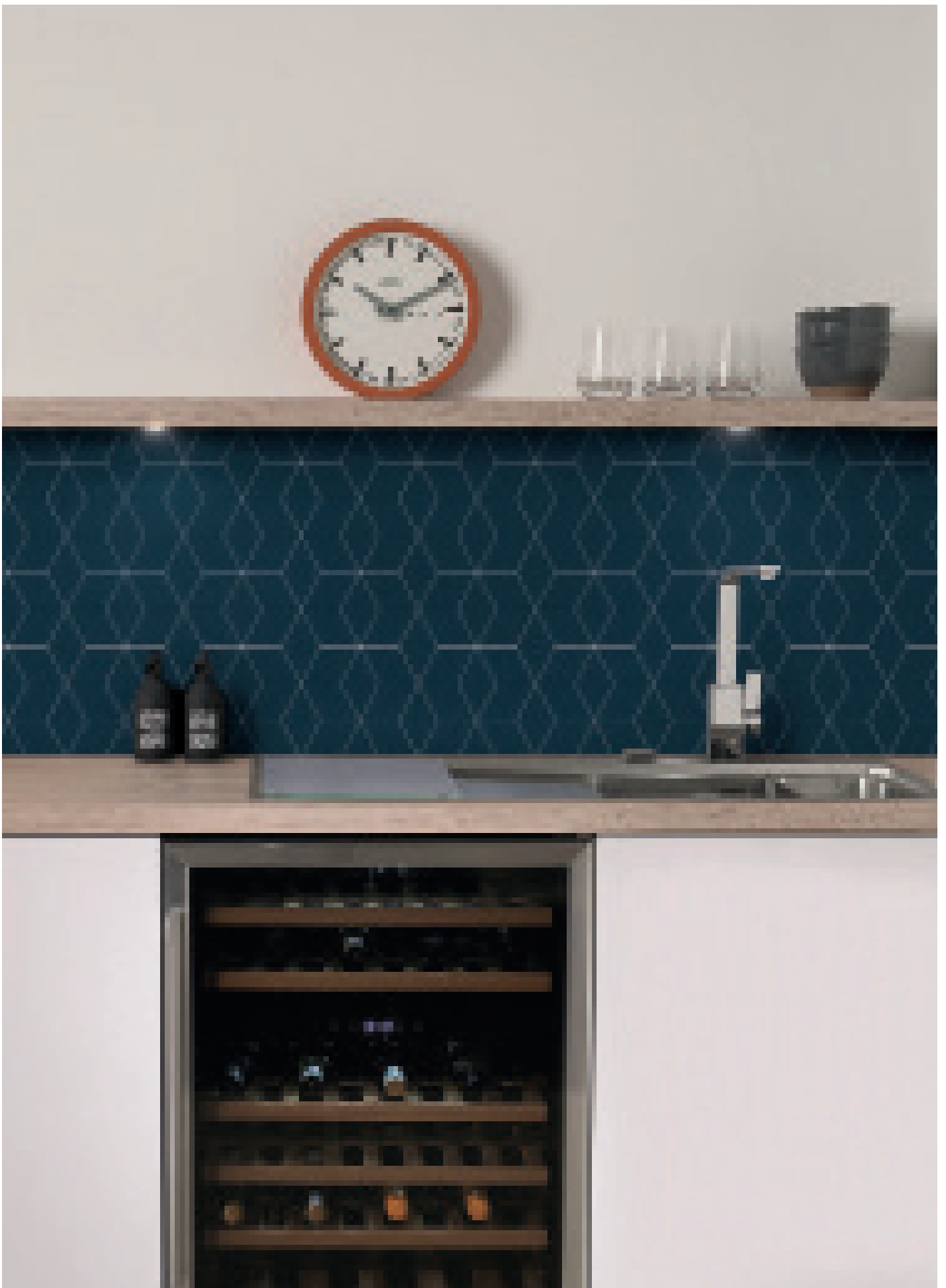
Roulette Curves taupe MDF



Blocked Hex dove MDF



Blocked Hex midnight MDF

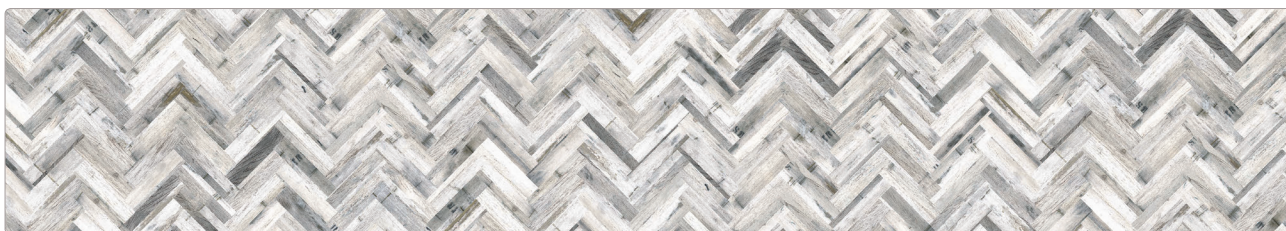


natural appeal

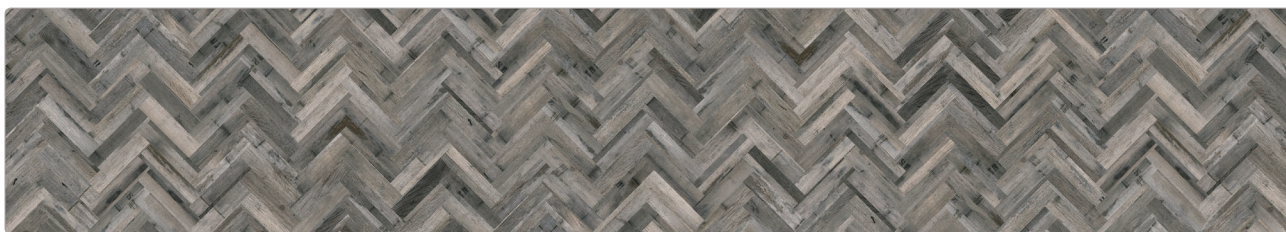
At Bushboard we love the appealing look and character of natural materials. Woodgrains are ever-popular and our new designs have evolved, offering rich colour and unique grain patterns.

Pale grey and chalky white tones along with sunbleached neutrals are very definitely in fashion.

Our exposed, rustic London Brick decor is produced in life-like proportion so offers a warm, realistic and edgy finishing touch to any industrial styled, contemporary room.



Herringbone whitewash MDF



Herringbone natural MDF



London Brick MDF

BB get the look

Mix shades within the same colour palette for a subtle finish. Use the splashback to create a feature wall in a neutral kitchen scheme and it will instantly make a big impact.

Splashback: Herringbone whitewash MDF
Worksurface: Options Lightning Graphite in quarry texture.



a work of art

As part of our collection of splashbacks, we are excited to offer graphic designs that are sure to start a conversation!

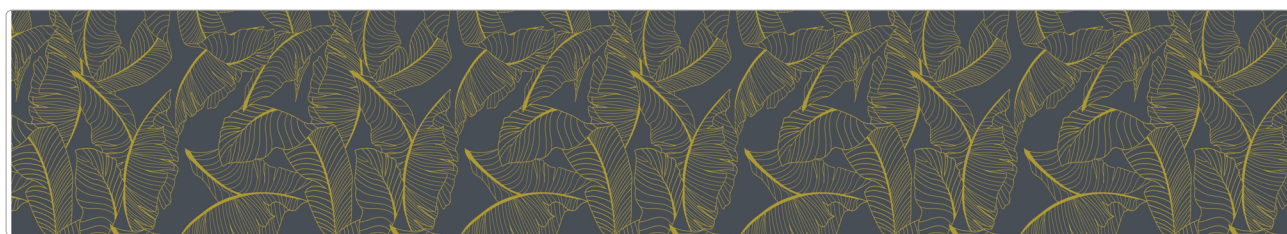
A work of art for your walls, these decors will add a sense of drama to your interior. Use to create a feature wall in a neutral kitchen scheme, a splashback will instantly make a particular area stand out from the rest of the space.

These designs offer a creative and truly special alternative for your walls.

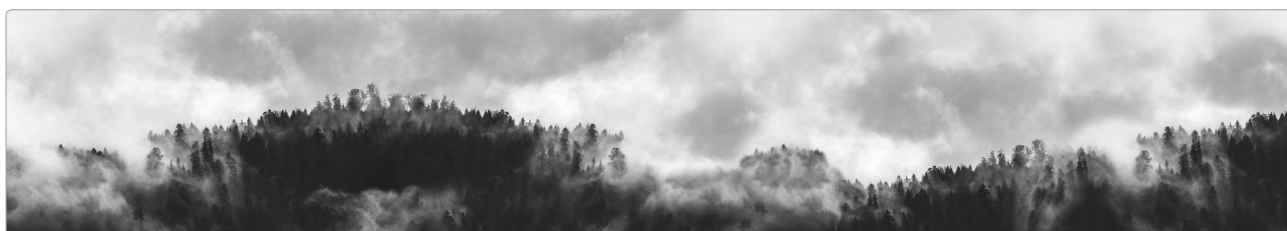
Pictured right: Summer Palm MDF splashback with Omega Tobacco Oak worksurface in ultramatt texture.



Summer Palm MDF



Golden Grove MDF



Hazy Forest Acrylic



the collection

Our range of double-sided MDF splashback designs have been perfectly paired to provide a '2-in-1' solution, combining designs with similar colour tones to allow flexibility of decor choice right up to the moment of installation. All acrylic splashbacks are one-sided.

MDF



Side 1. Casablanca multi MDF



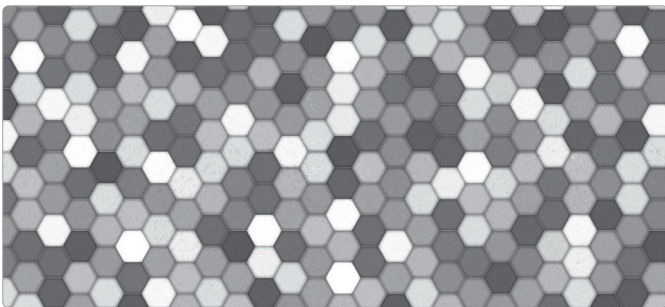
Side 2. Vintage taupe MDF



Side 1. Casablanca grey MDF



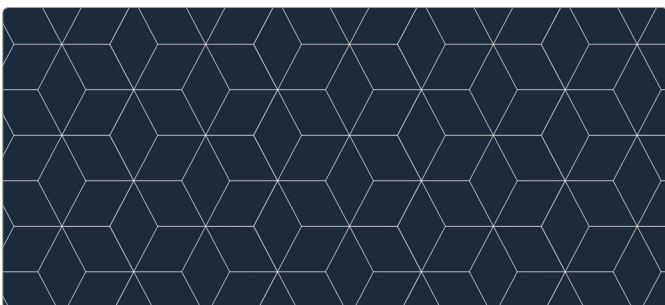
Side 2. Vintage grey MDF



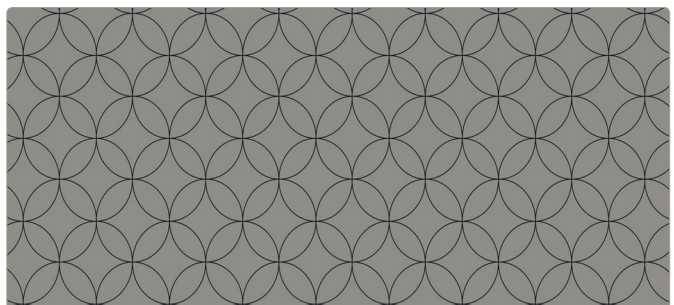
Side 1. Honeycomb MDF



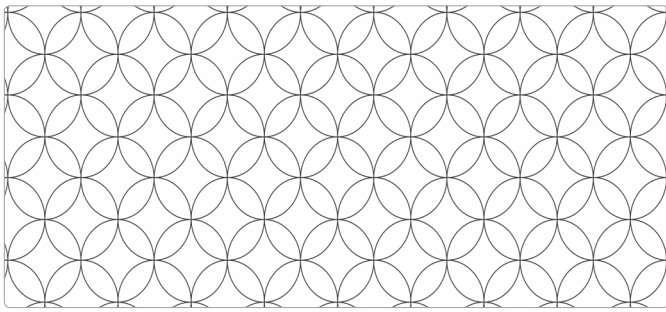
Side 2. Blocked Hex dove MDF



Side 1. Blocked Hex midnight MDF



Side 2. Roulette Curves taupe MDF



Side 1. Roulette Curves white MDF



Side 2. Herringbone whitewash MDF



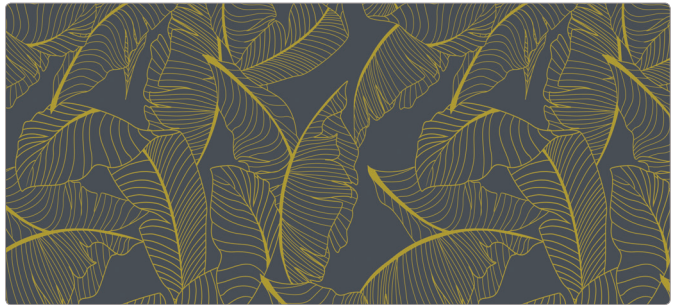
Side 1. Herringbone natural MDF



Side 2. London Brick MDF



Side 1. Summer Palm MDF

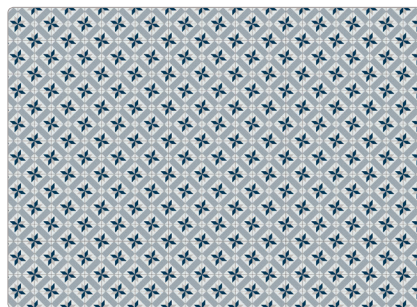


Side 2. Golden Grove MDF

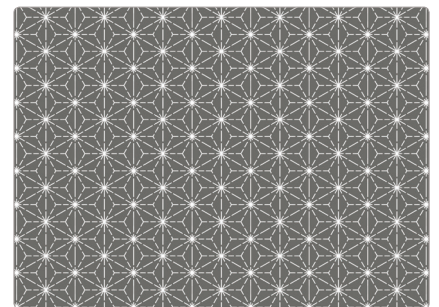
acrylic



Inner City ice cloud acrylic



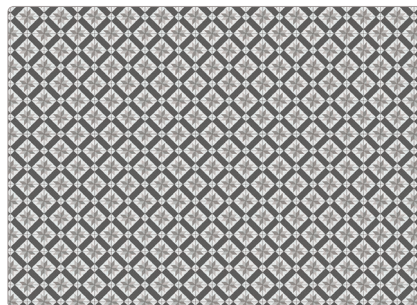
Kaleidoscope cool blue acrylic



Constellation acrylic



Inner City ocean grey acrylic



Kaleidoscope charcoal grey acrylic



Hazy Forest acrylic

peace of mind

BB complete

The professional worktop jointing adhesive

We know the importance of the final installation, that's why we've developed BB Complete, our bespoke adhesive and sealant which should be used by your installer when your splashback is fitted.

BB Complete is available in two versions.

Our unique installation adhesive is technically superior and can be used to bond the splashbacks to the wall. As this is not seen it is a cost effective neutral colour. It's flexible, super strong and will not shrink or break down like silicone.

BB Complete is also available as a sealant in a range of colour options. It offers superb performance and allows your installer to join, bond and seal your splashback.

The wide choice of colours available will give you the perfect colour co-ordinated result.

Always use BB Complete for peace of mind.

Our Customer Support Team can offer advice on installing and looking after your splashback. Our Installation, Care & Maintenance leaflet is included in every splashback and is also available from our website.

* Bushboard offer BB Complete sealant colours to suit our full range of worksurfaces. We suggest that you match the sealant colour to the worksurface along the bottom edge of the splashback and choose a complementary colour where splashbacks meet.



Jet Black

Basalt Grey

Slate Grey

Pewter Grey

Silver Grey

Ash Grey

Ice White

Ivory

Vanilla

Oatmeal

Toffee

Fudge

Mushroom

Chestnut

Chocolate

Cherry Red

| design | material type | adhesive colour | MDF splashback 3000 x 600 x 9mm | acrylic splashback 3000 x 600 x 4mm |
|----------------------------|---------------|-----------------------|------------------------------------|--|
| Casablanca multi | MDF | Fudge | ● | |
| Casablanca grey | MDF | Basalt grey | ● | |
| Vintage taupe | MDF | Silver grey | ● | |
| Vintage grey | MDF | Silver grey | ● | |
| Honeycomb | MDF | Basalt grey | ● | |
| Roulette Curves white | MDF | Ice white | ● | |
| Roulette Curves taupe | MDF | Pewter grey | ● | |
| Blocked Hex dove | MDF | Silver grey | ● | |
| Blocked Hex midnight | MDF | Jet black | ● | |
| Herringbone natural | MDF | Pewter grey | ● | |
| Herringbone whitewash | MDF | Silver grey | ● | |
| London Brick | MDF | Toffee or Silver grey | ● | |
| Summer Palm | MDF | Olive green | ● | |
| Golden Grove | MDF | Slate grey | ● | |
| Inner City ice cloud | acrylic | Silver grey | | ● |
| Inner City ocean grey | acrylic | Silver grey | | ● |
| Kaleidoscope charcoal grey | acrylic | Silver grey | | ● |
| Kaleidoscope cool blue | acrylic | Silver grey | | ● |
| Constellation | acrylic | Pewter grey | | ● |
| Hazy Forest | acrylic | Basalt grey | | ● |

bb complete
the professional kitchen splashback adhesive
 Coloured adhesive *

* Our suggestions for the best BB Complete sealant colour to co-ordinate with the splashback designs.

However, we suggest that you match the sealant colour to your chosen worksurface along the bottom edge of the splashback and choose a complementary colour where splashbacks meet.

At Bushboard we're passionate about everything we do and we're always here to help.

We invest heavily in high quality manufacturing and work with the best materials and suppliers. Our values of partnership, loyalty and an ethical approach mean we do what's right; that's why we've been around since the 1930s.

Even after Bushboard products arrive in your home we strive to assure a quality installation. Our BB Complete adhesive and sealant range is designed to make the installer's life easier and assure a quality long-lasting installation for you.

Quality

Manufacturing with the finest materials is what gives Bushboard surfaces their signature quality. While beautiful and stylish to look at, they are also constructed to cope with the wear and tear of everyday living.

Care & Maintenance

Bushboard splashbacks are so easy to maintain. On a day-to-day basis all you need to do is wipe them down with a moist cloth and your favourite mild detergent. Refer to our installation instructions for more information.

Edges and Trims

BB Vista splashbacks are not finished on the edges. If you are using the product in an area that requires an edging strip, we suggest an appropriate size tile trim to give a neat finish.



Bushboard surfaces are guaranteed for their lifetime. Bushboard will make good by repair and/or replacement (at its discretion) any splashback product of its manufacture which can be shown to have failed by reason of defects in its manufacture, subject to fair wear and tear, provided the product has been installed and used in accordance with the manufacturer's instructions and that the products are used for their intended purpose. Proof of date and place of purchase required. This guarantee is in addition to your statutory rights as a consumer and does not affect your rights in any way.

www.bushboard.co.uk

tel: 01933 232 272

email: help@bushboard.co.uk



@bushboard



www.facebook.com/bushboard



@bushboard



Bushboard

Bushboard Ltd
 9-29 Rixon Road
 Wellingborough
 NN8 4BA

The company reserves the right to change specifications at any time without notice. Every effort has been made to achieve faithful representations of our products in this brochure, but due to printing limitations we recommend that samples of actual material are requested before purchasing.

even more choice

BB omega

Here at Bushboard we strive to make sure that you are spoilt for choice!

We also offer a comprehensive range of contrasting solid colour and metal MDF splashback designs across two of our other collections, Omega and Options. There is an abundance of choice so take a look.

* Please visit www.bushboard.co.uk, ask your retailer or refer to the Omega or Options brochure for full range information.



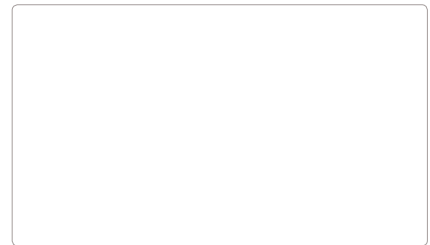
Lime higloss



Florida higloss



Blanc Megeve linear



Blanc Megeve higloss



Mulberry higloss



Graphite higloss



Bluestone fa



Neon fa



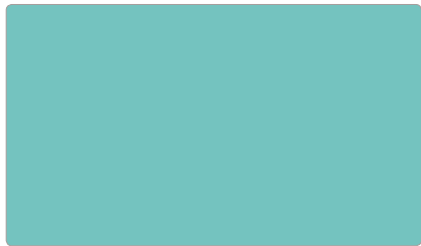
Brushed Aluminium metal



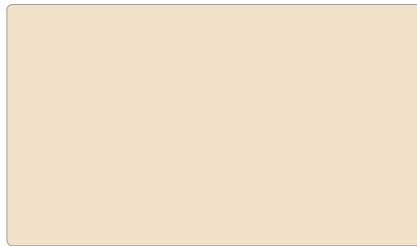
Steel Grey linear

take your pick

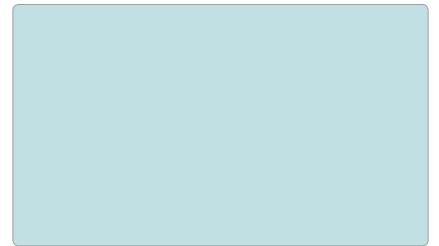
BB options



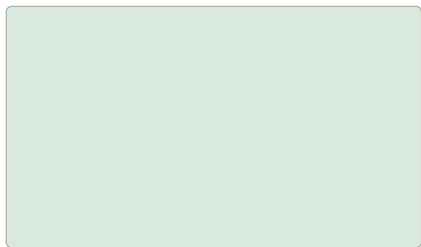
Lagoon gloss



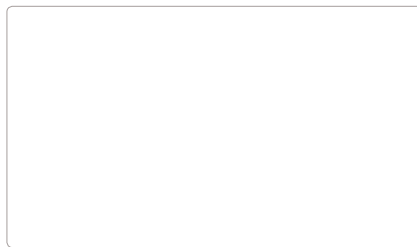
Stone gloss



Oxygen gloss



Verdigris gloss



Pure White gloss



Steel Blue gloss



Havana gloss



Espresso gloss



Grenadine gloss



Brushed Copper metal



Khaki fa



Brushed Aluminium metal



Charcoal ultramatt

smart and sleek

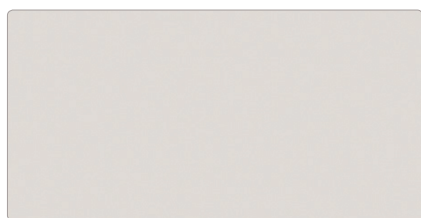
BB evolve

If your look is more low-key, why not choose from our collection of eight plain acrylic splashbacks. This palette of subtle colours not only look stunning, but are also ever so practical and easy to clean.

* Please visit www.bushboard.co.uk, ask your retailer or refer to the Evolve brochure for full range information.



Pearl Shimmer



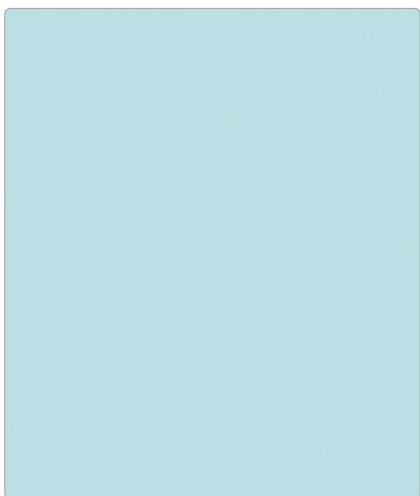
Latte



Stone



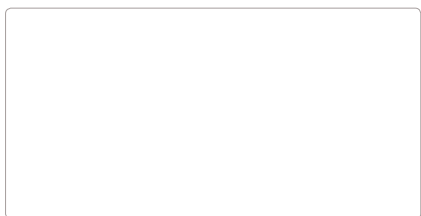
Noir Shimmer



Duck Egg



Hazel



Snow



Jet Black



Duck Egg acrylic splashback teamed with Evolve Lightning Obsidian 12.5mm ultra-slim worksurface and upstand in granit texture. Image shows core-coloured drainer grooves.

here to help

Choosing a new kitchen is an exciting time and we have all the tools you need.

Start online and get creative with our Design Studio, order your samples and then find a retailer. With Bushboard it's so easy.

Make it real

Bring your chosen designs to life with our Design Studio.

Choosing worksurface, splashback and upstand designs, paint finishes and floors can be challenging. Here you can play with confidence until it's just so, and it's as easy as 1-2-3.

Visit www.bushboard.co.uk/design-studio



what to do next!

order brochures | order free samples | create with our design studio
find inspiration for your home | find a retailer near you

www.bushboard.co.uk



Sampling

Every year thousands of customers use our sampling service to help them plan their kitchen surface scheme.

Your retailer can request these for you or you can order them directly by visiting our website.

In fact, to make it really easy, we will send you up to six of your favourite designs, free of charge, delivered direct to your door.

www.bushboard.co.uk



Our Retail Partners

We have thousands of retail partners who will be happy to help you with your new kitchen plans, give you advice and enable you to explore the full range of samples.

Simply enter your postcode into our 'Find a retailer' search on our website to find those nearest to you.

www.bushboard.co.uk/retailers




Customer Support Team

Need to talk?

Our Customer Support Team is here to help.

01933 232 272
help@bushboard.co.uk

-  @bushboard
-  facebook.com/bushboard
-  @bushboard
-  Bushboard
-  Bushboard Ltd

Back cover picture: Herringbone | natural MDF splashback with Omega Urban Stone worksurface in fusion texture.

